

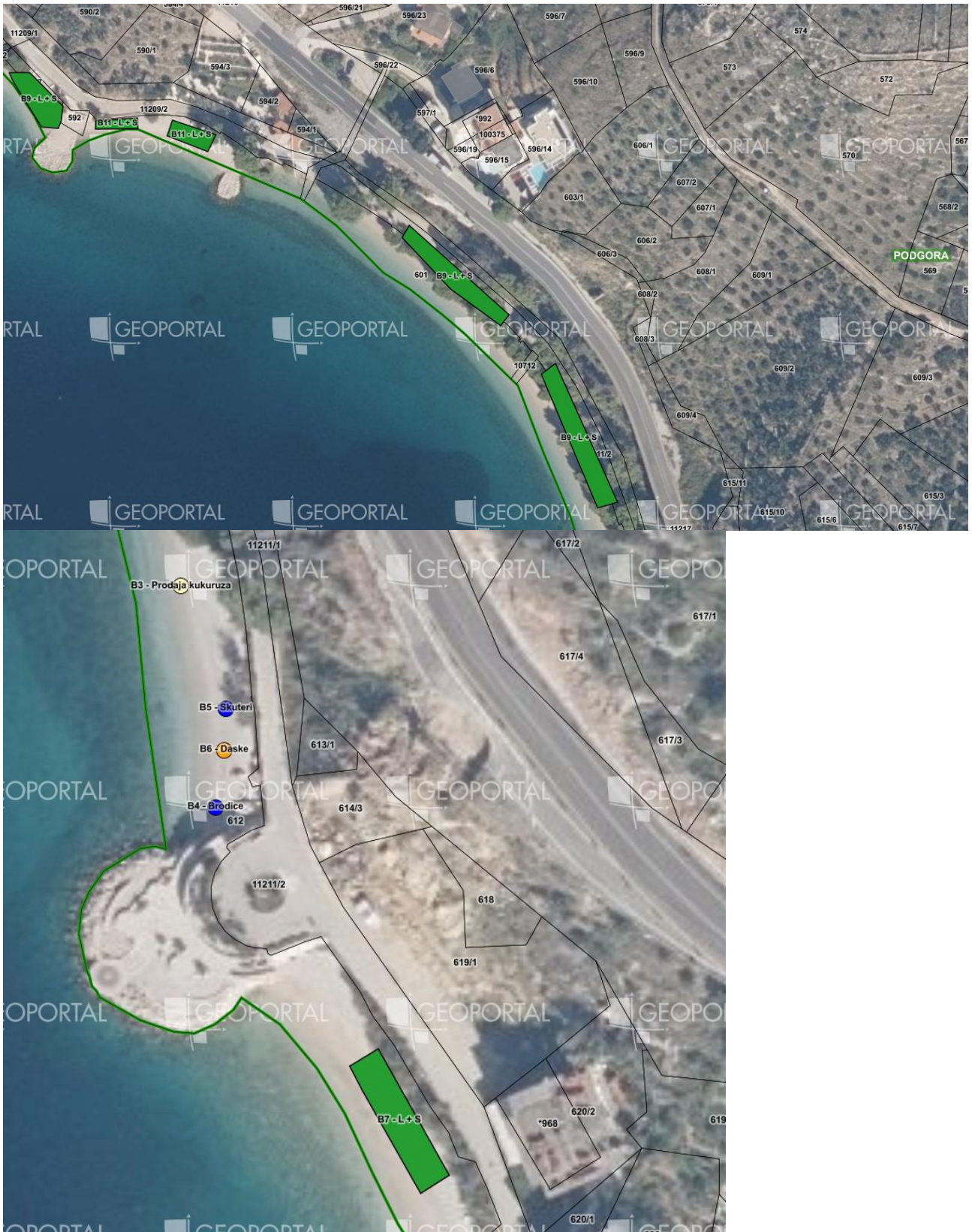
## TUMAČ ZNAKOVLJA KARTOGRAFSKOG PRIKAZA:

<b>ZELENA</b>	LEŽALJKE I SUNCOBRANI
<b>NARANČASTA</b>	PEDALINE, DASKE I SLIČNO
<b>RUŽIČASTA</b>	MASAŽA
<b>MODRA</b>	BRODICE, JET SKI, BROD ZA VUČU
<b>ONYX</b>	AMBULANTNA PRODAJA
<b>TIRKIZNA</b>	AQUAPARK
<b>CRVENA</b>	MOBILNI UGOSTITELJSKI ŠANK
<b>ŽUTA</b>	TERASA UZ UGOSTITELJSKI ŠANK
<b>LJUBIČASTA</b>	TRAMPOLIN, ODBOJKA

## DRAČEVAC



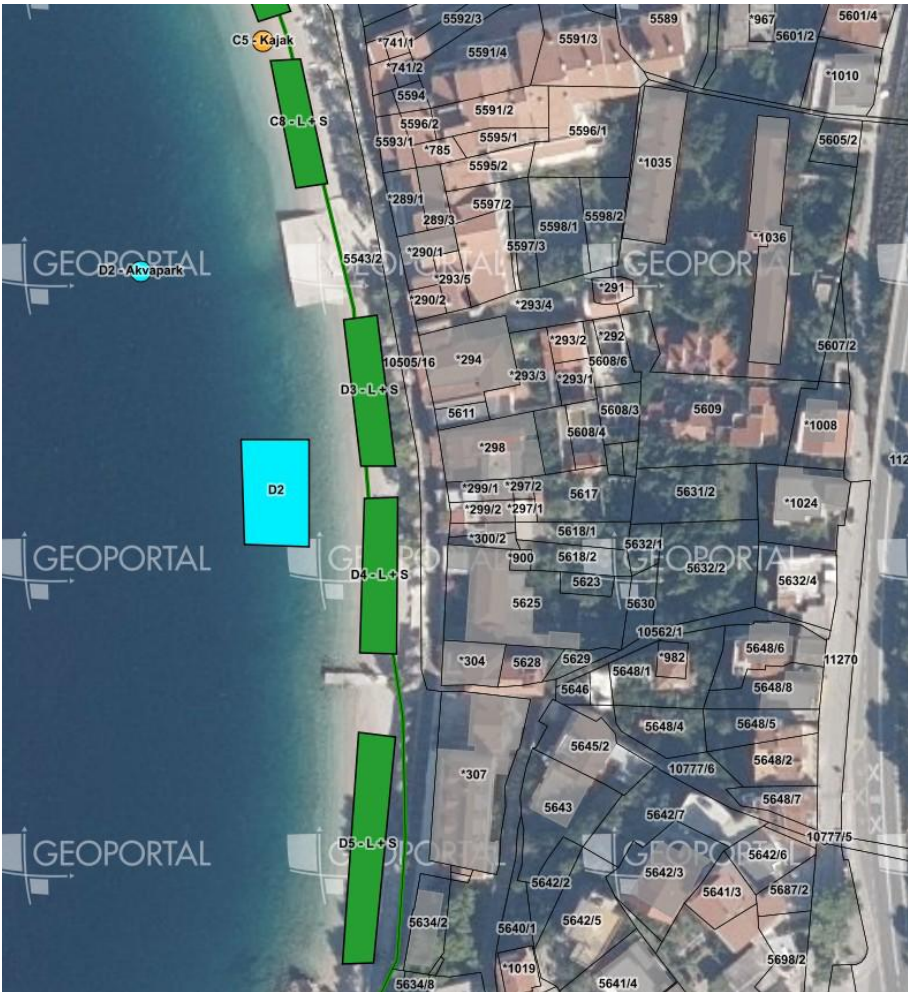
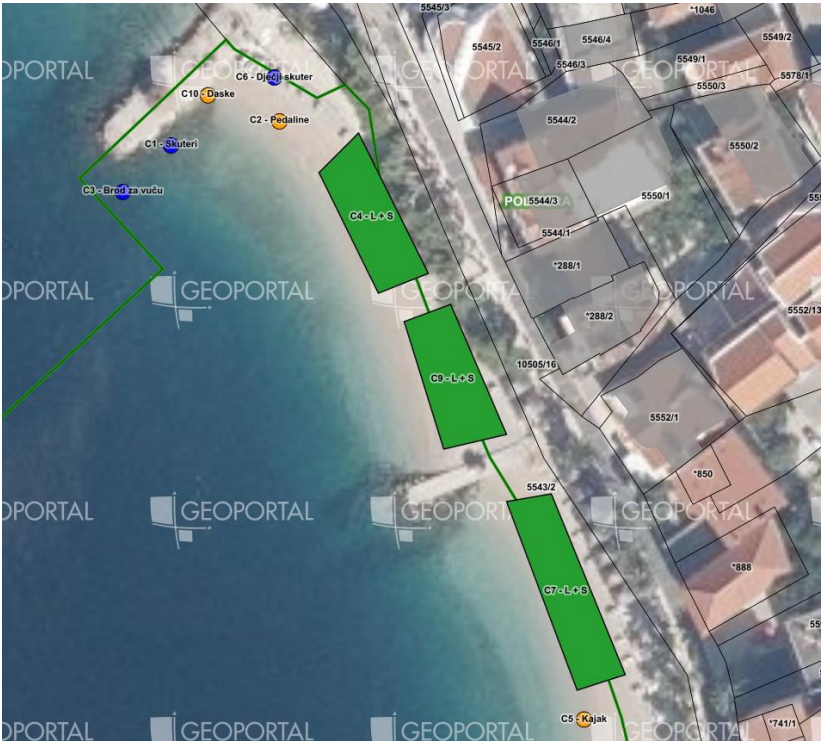
# PLIŠIVAC



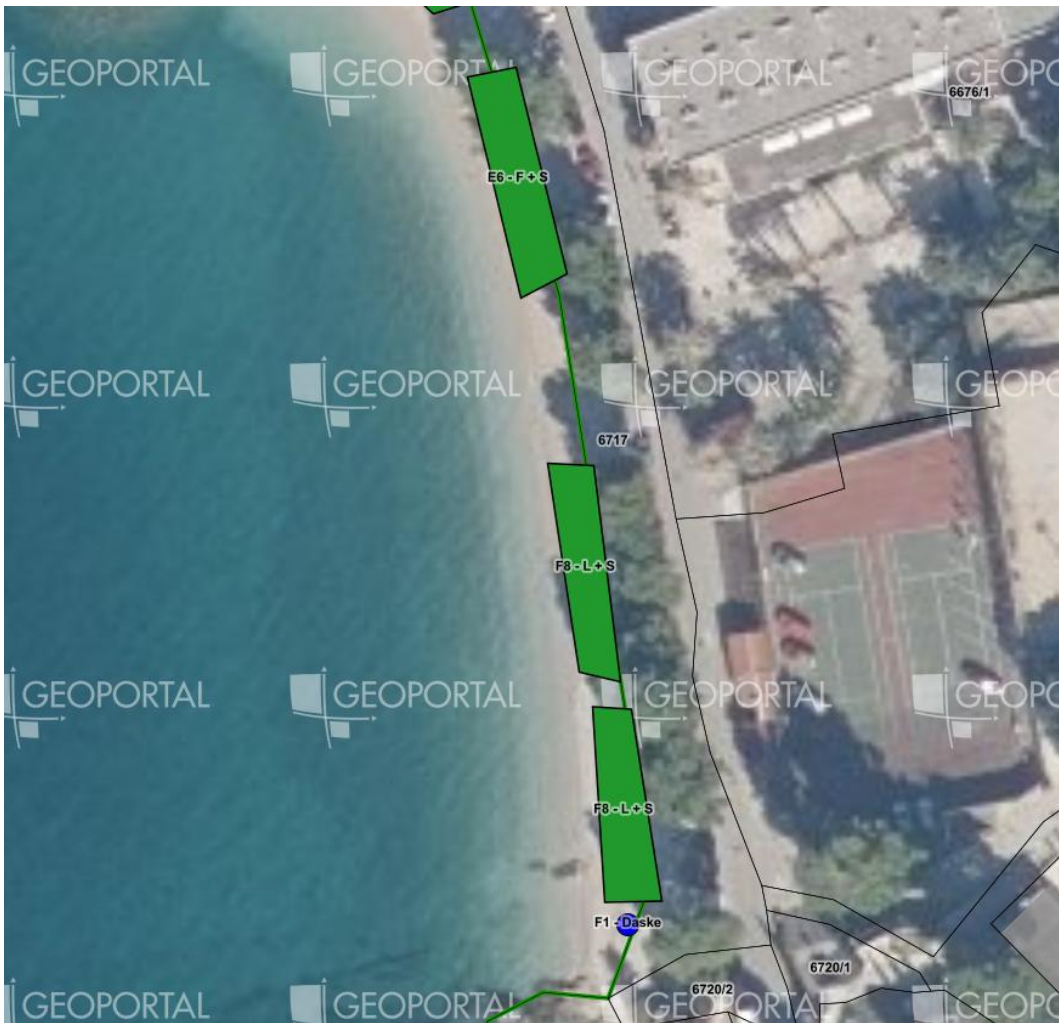
# ISPOD HOTELA „SIRENA”



# PODGORA

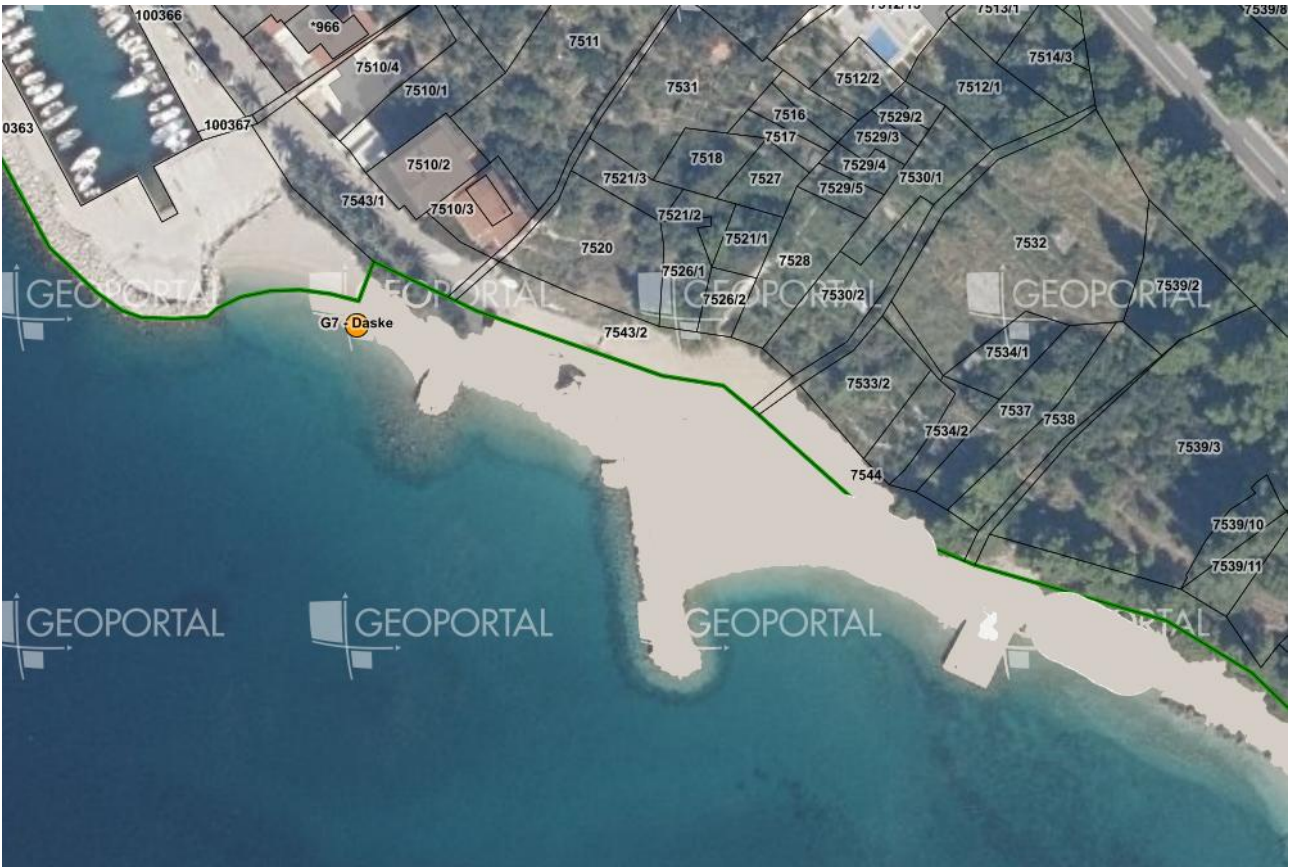
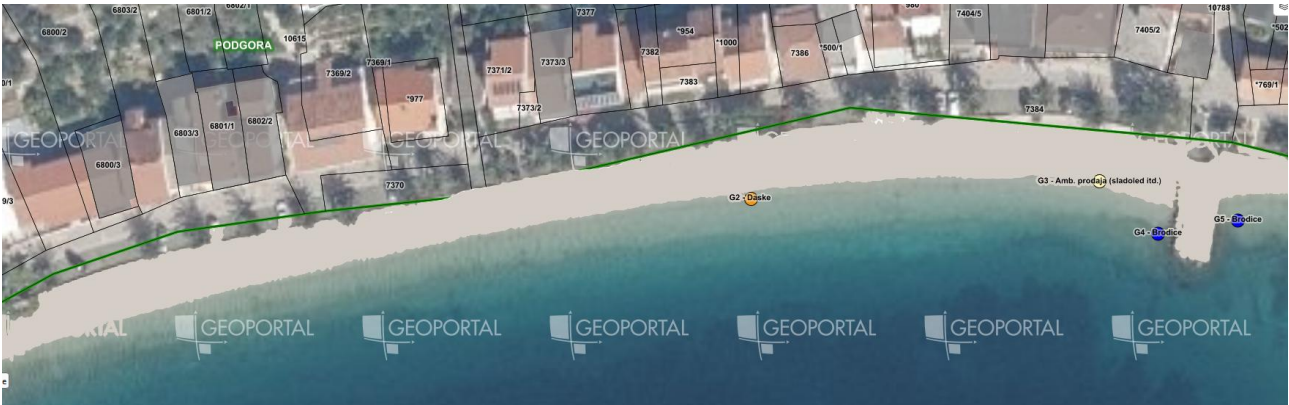






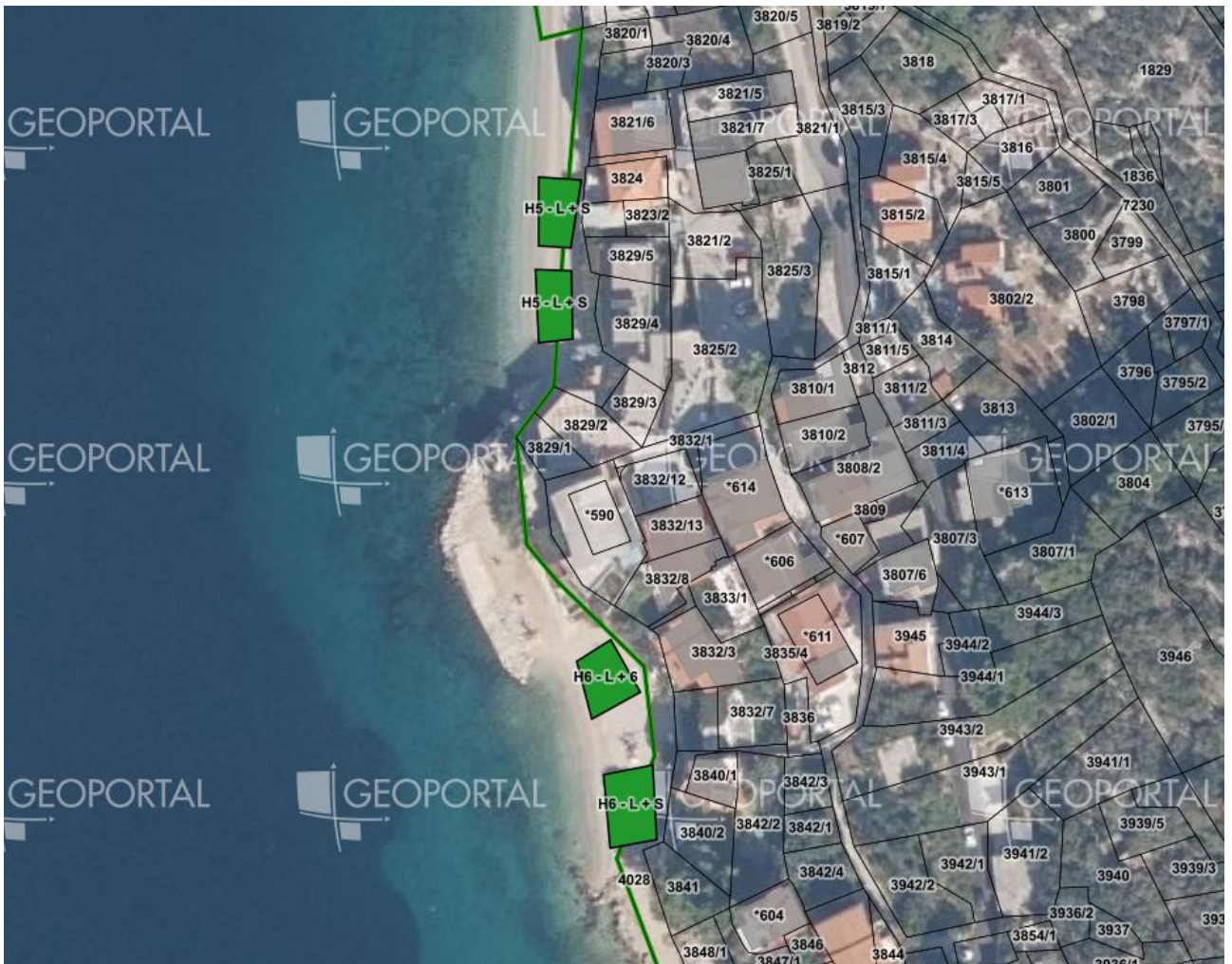


# PODGORA - ČAKLJE



# DRAŠNICE





# IGRANE





# ŽIVOGOŠĆE

